

David Rogers Photography Expeditions

.... leading small groups
of photographers into
Africa's wildest places.



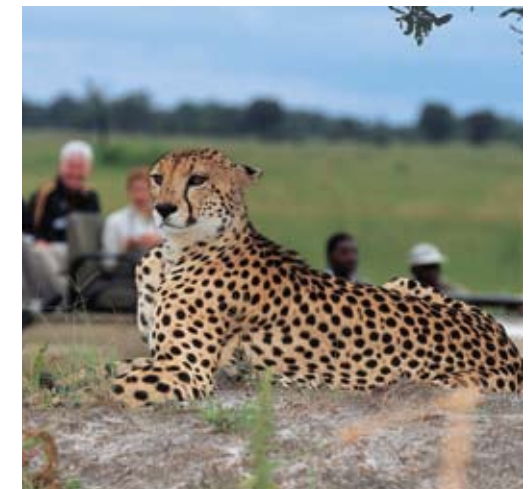
Very best of Botswana

Join a photographic workshop with David Rogers and five other photographers from 8 - 15 February 2011 and capture Botswana's Okavango Delta in the green season when photography is at its best. \$4390 person, no single supplement.

The journey begins in the small town of Maun, which still retains something of a reputation as a dusty frontier town positioned as it is the southern end of the Okavango Delta panhandle on the edge of the Kalahari.

The journey begins with a fantastic flight over the Okavango with its sprawling fingers and north towards the Linyanti -- a 2320 square

kilometre, wild private unfenced wilderness area on the border with Namibia. Here we will be spending the next three nights at Lebala luxury tented camp which has a reputation for delivering some of the most outstanding predator action in Africa. Lebala means wide open spaces and the grasslands are interspersed with palm trees and is fringed by the



Linyanti River system. The wetlands and flood plains around Lebala offer a wonderful variety of wildlife with excellent sightings of elephant, hippo, lechwe, zebra, giraffe, impala, wildebeest, kudu, tsessebe, roan, sable, buffalo and the ever present predators; wild dog, lion, cheetah and hyena.

Nocturnal sightings of rare and elusive species such as, leopard, Selous Mongoose, small spotted genet, and aardwolf, are possible, as well as Natal Nightjar, Pennantwinged Nightjar and a large variety of owls. We will have plenty of fun shooting using the warm light of spotlights.



After three nights we head southwards for Kwara where we will spend the next four nights experiencing the Okavango which, at 1,6 million hectares, is the largest inland Delta and one of the great natural wonders of the world. y

Kwara is on an island and fronts onto a huge floodplain, adjacent to the permanent water of the Delta, and is backed by 1,700 square kilometers of wilderness, bordering the game rich Moremi Reserve. The area encompasses clear Delta waters with reed-lined lagoons and chan-

nels, open grasslands, mopane woodlands and palm-fringed islands. Lechwe, sitatunga, reed-buck, bushbuck, hippo, crocodiles, elephant, buffalo, sable, roan, zebra, giraffe, wildebeest, impala and tsessebe as well as Lion, hyaena, wild dog, leopard and cheetah are abundant.

We will also explore in vehicles as well as mekoro dug out canoe through crystal-clear waters where have a chance to photograph kingfishers, pygmy geese, fish eagles, jacanas, darters and the elusive Pels Fishing Owl. We will also visit the famous Godikwe lagoon, where you can stand eye to eye with thousands of herons, storks and other nesting birds.



The eight luxury safari-style tents are built on raised decks, within a grove of huge and ancient african ebony trees. Each tent has its own viewing deck, en-suite toilets and modern amenities.

More questions?

A FAQ document that includes what to take, what to expect, other tours is on www.davidrogers.co.za, or contact david@davidrogers.co.za

Basic Itinerary

8 February: Depart from Maun to Lebala

8 - 10 February: Lebala

10 February: Depart for Kwara

10 - 14 February: Kwara

15 February: Depart from Kwara to Maun

What is included

light aircraft transfers, photographic guiding by David Rogers, workshop notes, accommodation, meals, beverages, game drives, bush walks, boat cruises, fishing, mekoro trips, laundry and medical evacuation with MRI

Secure your place

by contacting david@davidrogers.co.za

